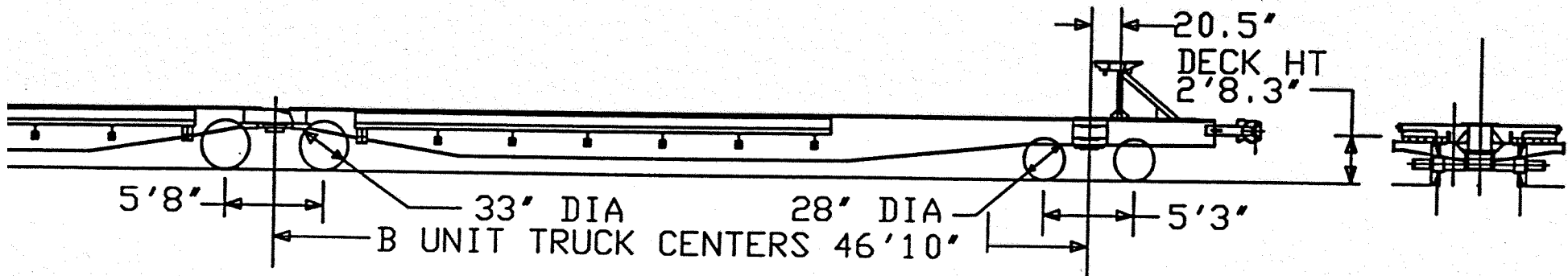
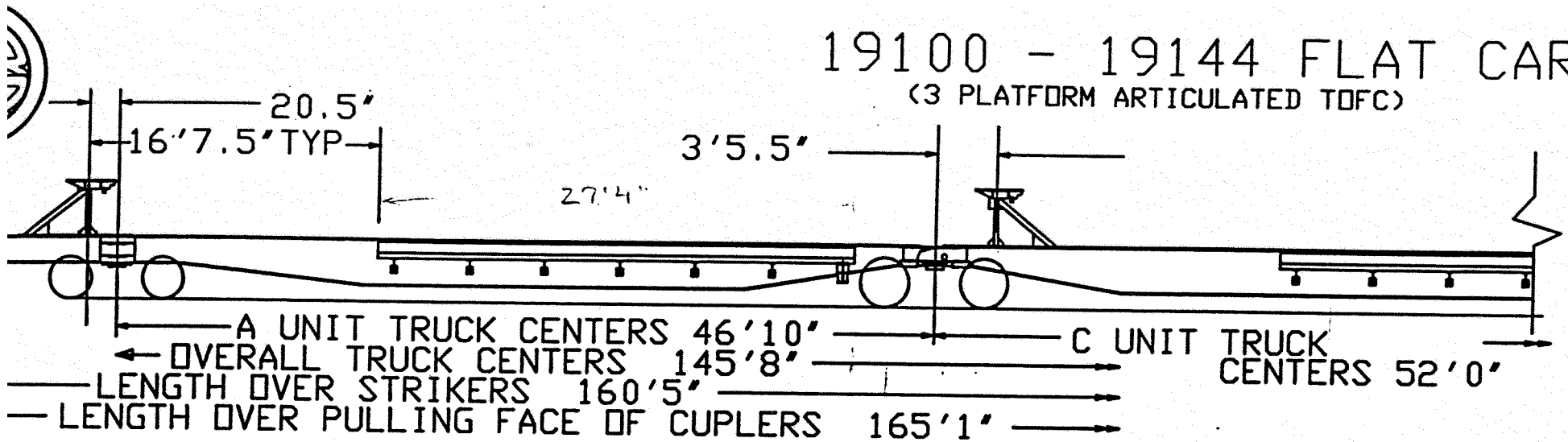


19100 - 19144 FLAT CAR
(3 PLATFORM ARTICULATED TOFC)



BUILT BY
 YEAR BUILT
 SERVICE
 WHEELS
 JACKS
 SPRINGS
 COUPLERS
 ARTICULATED CONN.
 WT.

PAC CAR
 1984
 1985
 CJ33B & CE28B
 ASF H-10 SNUBBER
 6 x 11 NFL RB
 SBE69AE
 ASF
 35,350 (ENDS)
 24,000 (CENTER)

ABDW (2 SETS W/ EMPTY/LOAD)

CYLINDERS 7.5 x 12 7.5' x 12"
 SHOES 2" H-4
 SIDE BEARINGS STUKI CC
 END OF CAR CUSHION 19135-144

REV 4/08/94 - JDC
 DWN 3/30/92 - JDC

ALASKA RAILROAD CORP.